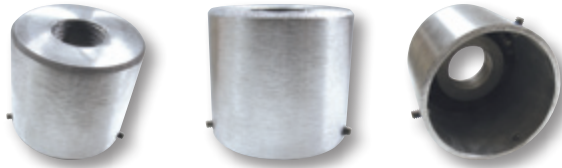


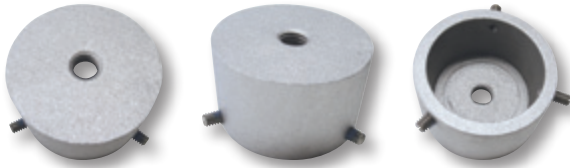
# FLAGPOLE TRUCKS & ACCESSORIES



## POLE TOP ADAPTERS

These adapters are used in mounting a truck that has a spindle threading of 1-1/4" NPT and the pole does not have a threaded top plug installed. The adapter is tapped 1-1/4" NPT and is designed to slip over the top of the pole and is secured by three 1/4"-20NC stainless steel set screws. Please specify color when ordering. If not specified, silver will be supplied. Pole Top Adapters can be mixed to achieve the higher quantity pricing.

MODEL	FITS POLE DIAMETER	LBS.	SILVER			BRONZE #313			WHITE			BLACK		
			ITEM #	1-5	6+	ITEM #	1-5	6+	ITEM #	1-5	6+	ITEM #	1-5	6+
PTA-238	2-3/8"	1.1	340238	\$52	\$47	340247	\$57	\$52	340256	\$57	\$52	340265	\$57	\$52
PTA-212	2-1/2"	.90	340239	52	47	340248	57	52	340257	57	52	340266	57	52
PTA-3	3"	1.2	340240	70	65	340249	76	70	340258	76	70	340267	76	70
PTA-312	3-1/2"	1.5	340241	70	65	340250	76	70	340259	76	70	340268	76	70
PTA-4	4"	2.1	340242	85	74	340251	93	83	340260	93	83	340269	93	83
PTA-412	4-1/2"	2.3	340243	85	74	340252	93	83	340261	93	83	340270	93	83
PTA-5	5"	2.7	340244	85	74	340253	93	83	340262	93	83	340271	93	83
PTA-512	5-1/2"	3.2	340245	110	99	340254	119	107	340263	119	107	340272	119	107
PTA-6	6"	4.0	340246	110	99	340255	119	107	340264	119	107	340273	119	107



## FLAGPOLE CAPS

Cast aluminum construction designed to slip over the top of the flagpole and be secured with three 1/4"-20NC stainless steel set screws. The top of the cap is designed to accept an ornament with a spindle threading of 1/2"-13NC as standard but can be supplied with other sizes of threading or no threading. Please specify color when ordering. If not specified, silver will be supplied.

MODEL	FITS POLE DIAMETER	LBS.	SILVER			BRONZE #313			WHITE			BLACK		
			ITEM #	1-5	6+	ITEM #	1-5	6+	ITEM #	1-5	6+	ITEM #	1-5	6+
FC-20	2"	.60	340274	\$20.00	\$18.00	340276	\$23.00	\$21.00	340278	\$23.00	\$21.00	340280	\$23.00	\$21.00
FC-212	2-1/2"	.60	340275	23.00	21.00	340277	25.00	23.00	340279	25.00	23.00	340281	25.00	23.00



## PULLEY & EYEBOLT ASSEMBLIES

Includes Hex Nut, Washer & Lock Washer

MODEL	ITEM #	OVERALL LENGTH	THREAD LENGTH	BOLT THREADING	BOLT MATERIAL	PULLEY HOUSING MATERIAL	PULLEY MATERIAL	MAX. ROPE DIAMETER	1-5	6+	LBS.
DELUXE	340236	4-1/8"	2-3/8"	5/16"-18NC	STAINLESS STEEL	STAINLESS STEEL	NYLON	5/16"	\$18.50	\$17.50	.02
STANDARD	340237	3-1/8"	1"	#8-32NC	ZINC PLATED STEEL	ZINC	ZINC	3/16"	5.60	5.10	.07



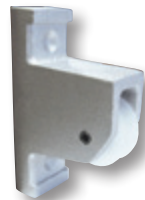
## ROPE PULLEYS

ITEM #	DIA.	WIDTH	MATERIAL	MAXIMUM AXLE DIA.	MAXIMUM ROPE DIA.	USED WITH OUR TRUCK MODEL NUMBER...	1-5	6+	LBS.
340302	1"	3/8"	NYLON	3/16"	1/4"	ST-1-38, ST-1-12, ST-1-16, ST-1-20	\$3.10	\$2.80	.01
340356*	1-1/2"	1/2"	NYLON	1/4"	1/4"	OTH, IH-1-35, OT35	4.40	3.90	.03
340355	1-1/2"	9/16"	NYLON	1/4"	1/4"	ST2, ST3, OT1, OT25, IH-1 INNER PULLEY INSERT	4.40	3.90	.03
340358	1-1/2"	3/4"	NYLON	1/4"	5/16"	RTS-1-125, RTC-1-138, RTC-1-2, RTC-1-238	4.70	4.40	.04
340357	1-15/16"	9/16"	NYLON	1/4"	5/16"	RTS-2-125, RTC-2-138, RTC-2-2, RTC-2-238, RTSB	4.70	4.40	.04
340320	2"	1/2"	NYLON	1/4"	5/16"	OT2, OT3, OT325, IH-1-3, IHT-VS	3.90	3.50	.04
340359	2-1/2"	7/8"	ALUMINUM	1/2"	3/8"	HDT-1	22.00	20.00	.40
340305	3-3/4"	3/4"	ALUMINUM	1/2"	3/8"	HDT-2	22.50	20.50	.45

\*340356 is also used with our Vertical Mount Pulley Assemblies. Please note that the diameter of all of our nylon pulleys can vary plus or minus 1/16".

## VERTICAL MOUNT PULLEY ASSEMBLIES

Cast aluminum construction. 1-1/2" outside diameter cast nylon pulley on a 1/4" stainless steel axle. Attaches with two 1/4"-20NC stainless steel flat head screws or two stainless steel straps (not included). Maximum halyard diameter is 5/16". Not supplied as standard with holes drilled for mounting. Add \$2.00 for drilling.



ITEM #	COLOR	1-5	6+	LBS.
340298	SILVER	\$23.00	\$21.00	.60
340299	BRONZE #313	26.50	24.00	.60
340300	BLACK	26.50	24.00	.60
340301	WHITE	26.50	24.00	.60



## THREADED TOP PLUGS

Screws into top of pole with 1-1/4" NPT threading and allows for insertion of ornament with either a 1/2"-13NC or 5/8"-11NC spindle threading.

ITEM #	FOR ORNAMENT SPINDLE SIZE	1-5	6+	LBS.
340306	1/2"-13NC	\$28.00	\$25.50	.25
340307	5/8"-11NC	30.00	27.00	.25